



# PestWest<sup>®</sup>

FLYING INSECT SCIENCE

## FLYING INSECT MANAGEMENT

PROFESSIONAL STICKY TRAPS

PRO RANGE

PROFESSIONAL ELECTRONIC FLY KILLERS

COMMERCIAL RANGE

RETAIL RANGE

SPECIALIST RANGE

ANCILLARY PRODUCTS

QUICK REFERENCE GUIDE

FLY IDENTIFICATION

*Flies spread disease and suffering...  
...control them with PestWest*



# INTRODUCTION

Innovation, quality and power are key components in any PestWest unit. Combining excellent value with expertise from technicians and leading biologists, PestWest give you a diverse range of professional and specialist Electric Fly Killers.

By merging science with technology, PestWest units are designed to the highest specification whilst always keeping the end user in mind, saving you time and money.

PestWest are passionate about flying insect control, guaranteeing that you receive the very best units built to the highest specification.

PestWest is the proud holder of the Queens Award for Enterprise: International Trade 2004, the holder of regional and national awards for export sales and is the winner of the UK award for Best Use of Education and Training. It prides itself on manufacturing high quality, reliable and innovative products which incorporate unique design features.



ALL PESTWEST UNITS ARE CE MARKED AND CARRY THE REQUIRED EUROPEAN APPROVALS.  
ALL MODELS COME WITH A 3-YEAR GUARANTEE (EXCLUDING CONSUMABLES AND SUNDEW & ALPHA MODELS)  
EACH UNIT IS FITTED WITH ENVIRONMENTALLY RESPONSIBLE PESTWEST QUANTUM BL TUBES

# PROFESSIONAL STICKY TRAPS

PestWest Professional Sticky Traps are high quality units combining advanced glue board technology with slim-line designs. The slim-line designs enable glue boards to be placed closer to the UV tubes improving catch rates, whilst PestWest Reflectobakt® sleeves shield the board from the drying effect of the UV tubes.

With a PestWest sticky trap the insects are secured allowing units to be placed closer to sensitive areas. They do not have an electric killing grid making them silent, discreet and hygienic whilst catching all sizes of insects including smaller species such as Fruit Flies.

## ALL UNITS FEATURE:

- Quantum BL shatter resistant tubes coated with industry compliant FEP coating for maximum attraction and significantly reduced risk of contamination from glass breakages.
- Full-size sticky board to effectively catch even the smallest flies.
- Easy to remove bottom tray, drop-down guard and front covers - no tool service.
- Reflectobakt® sleeves increase attractiveness to insects, significantly slow the drying of the sticky board and allow longer board life and slimmer design.
- Interchangeable tubes and sticky boards on all units to minimise stocking requirements.
- All metal construction means longer lasting models for years of reliable service.

## Chameleon® 1x2 DISCRETION

Discreet and slim wall-mounted unit (free-standing bracket available). An attractive front cover conceals the sticky board and catch, which makes this unit ideal for areas in view of the public.

<b>Dimensions</b>	H: 31.5cm W: 48.5cm D: 6.5cm
<b>Weight</b>	4.3Kg
<b>Coverage</b>	Wall mounted / Freestanding: 70m <sup>2</sup>
<b>Finish</b>	White Stainless Steel
<b>Tube Data</b>	<ul style="list-style-type: none"> <li>• 2 x 15-watt PestWest Quantum BL tubes</li> <li>• Shatterproof coating with industry compliant FEP</li> <li>• Reflectobakt® technology</li> </ul>



## Chameleon® 1x2

Attractive, slim, wall-mounted (free standing bracket available), compact and unobtrusive, this unit is ideal for use in food preparation areas.

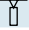
<b>Dimensions</b>	H: 31.5cm W: 48.5cm D: 6.5cm
<b>Weight</b>	4.3Kg
<b>Coverage</b>	Wall mounted / Freestanding: 90m <sup>2</sup>
<b>Finish</b>	White Stainless Steel
<b>Tube Data</b>	<ul style="list-style-type: none"> <li>• 2 x 15-watt PestWest Quantum BL tubes</li> <li>• Shatterproof coating with industry compliant FEP</li> <li>• Reflectobakt® technology</li> </ul>



# PROFESSIONAL STICKY TRAPS

## Chameleon® 2x2


Designed to be ceiling-suspended, this model provides 360° attraction and is ideal for industrial and commercial food premises.

<b>Dimensions</b>	H: 31.5cm W: 48.5cm D: 12.5cm
<b>Weight</b>	6Kg
<b>Coverage</b>	 Ceiling-suspended: 180m²
<b>Finish</b>	White Stainless Steel
<b>Tube Data</b>	<ul style="list-style-type: none"><li>• 4 x 15-watt PestWest Quantum BL tubes</li><li>• Shatterproof coating with industry compliant FEP</li><li>• Reflectobakt® technology</li></ul>



## Chameleon® Uplight

Attractive wall-mounted unit disguised as a wall light. It is the perfect choice for areas where fly control should be discreet, e.g. restaurants, and other eating areas.

<b>Dimensions</b>	H: 21cm W: 47cm D: 17cm
<b>Weight</b>	3.7Kg
<b>Coverage</b>	 Wall mounted: 40m²
<b>Finish</b>	White Silver Magnolia
<b>Tube Data</b>	<ul style="list-style-type: none"><li>• 1 x 15-watt PestWest Quantum BL tube</li><li>• Shatterproof coating with industry compliant FEP</li></ul>



# THE PRO RANGE

Innovative designs with decorative and unique covers to hide the glue board and insect catch, providing discreet and environmentally friendly fly control. All PRO units use advanced energy efficient electronic ballast systems to enhance tube performance, reduce running costs and avoid the need for starter replacement.

## Chameleon® VEGA

The Chameleon Vega is the latest addition to the award-winning range of UV fly control units manufactured by PestWest. Its revolutionary design is based on new slimline technology making the Vega a stylish, powerful and economical fly trap. Its elegant and ultra-slim design combined with an all stainless steel construction will suit most environments. It features new higher energy efficient UVA tubes with integrated Reflectobakt® technology powered by a state of the art electronic ballast to deliver efficient fly control with low running costs.

The slimness and style of the Chameleon Vega is achieved thanks to the latest generation of UVA tubes, which offer improved UVA performance as well as a reduction in glass content. The integration of the Reflectobakt® sleeve into the tube, the absence of starters and the unique self-holding mechanism of the front guard in open position all improve further the ease and speed of servicing.

<b>Dimensions</b>	H: 30cm W: 57.5cm D: 4cm
<b>Weight</b>	3.2Kg
<b>Coverage</b>	□ Wall mounted: 150m <sup>2</sup>
<b>Finish</b>	Stainless Steel
<b>Tube Data</b>	<ul style="list-style-type: none"> <li>• 3 x 14-watt T5 PestWest Quantum BL tubes</li> <li>• Shatterproof coating with industry compliant FEP</li> <li>• Integrated Reflectobakt® technology</li> <li>• Powered by an electronic ballast</li> </ul>



## MIRAGE™ PRO VS

A high-powered, yet discreet sticky trap unit providing decorative and attractive fly control. Wall-mounted model, ideal for use in restaurants, hotels and dining rooms where fly control should be hidden from view.

<b>Dimensions</b>	H: 50cm W: 30cm D: 15cm
<b>Weight</b>	3.3Kg
<b>Coverage</b>	□ Wall mounted: 60m <sup>2</sup>
<b>Finish</b>	Satin aluminium and polished stainless steel front
<b>Tube Data</b>	<ul style="list-style-type: none"> <li>• 2 x 25-watt PestWest Quantum BL tubes</li> <li>• Shatterproof coating with industry compliant FEP</li> <li>• Powered by an electronic ballast</li> </ul>

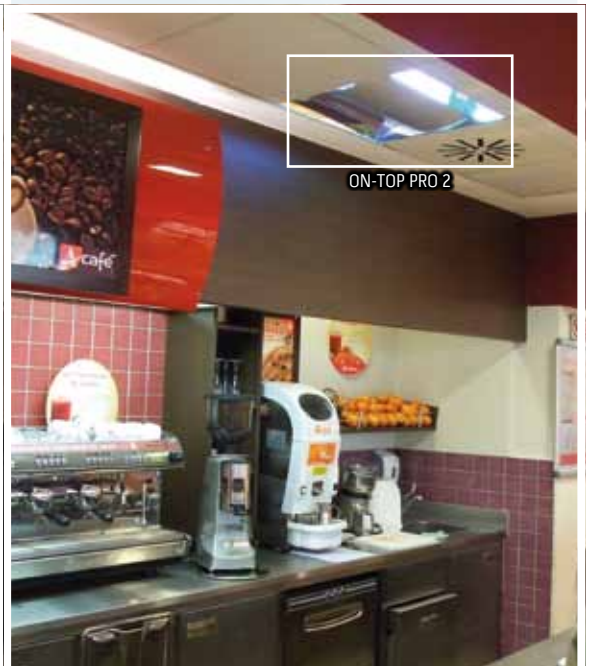
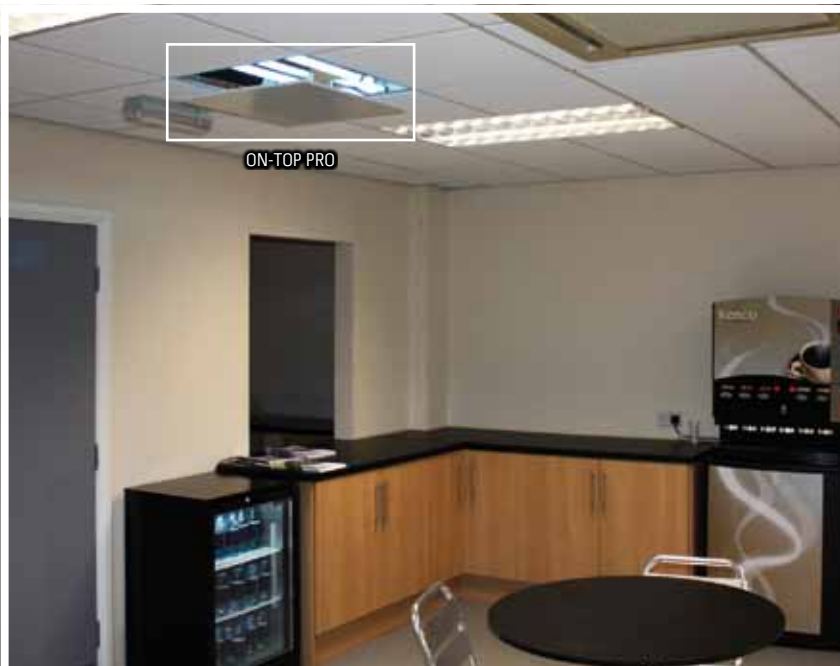
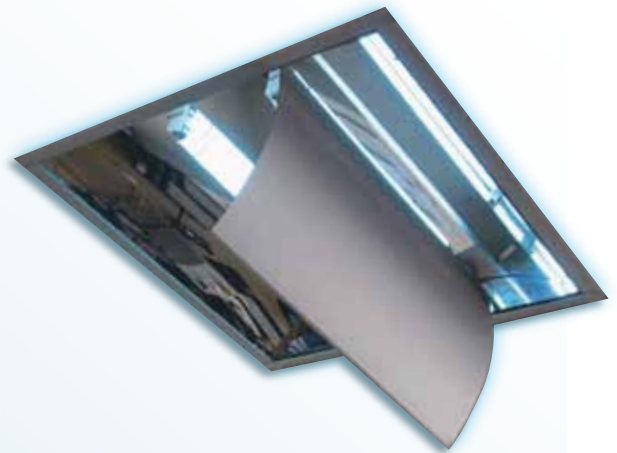


# THE PRO RANGE

## ON-TOP PRO | ON-TOP PRO 2

Innovative, discreet and stylish fly traps. These unique overhead designs fit discreetly and easily into new or existing suspended-ceilings. Ideal for convenience stores, supermarkets and areas where space limitations may have previously made situating a standard unit difficult. The patented designs avoid the possibility of fly fall-out and will efficiently control infestations in public spaces.

<b>Dimensions</b>	H: 59cm W: 59cm D: 13cm
<b>Weight</b>	6Kg
<b>Coverage</b>	☒ Ceiling-fitted: 50m <sup>2</sup>
<b>Finish</b>	Zintec steel body with white painted aluminium cover tray Zintec steel body with aluminium cover tray
<b>Tube Data</b>	<ul style="list-style-type: none"><li>• 2 x 25-watt PestWest Quantum BL tubes</li><li>• Shatterproof coating with industry compliant FEP</li><li>• Powered by an electronic ballast</li></ul>



# PROFESSIONAL ELECTRONICS FLY KILLERS

The industrial Nemesis® Ultima Electronic Fly Killer range combines patented features with ease of service and maximum effectiveness.

## ALL UNITS FEATURE:

- Unique transformer - minimises shattering of insects.
- Front guard lockable in open position - for easy service.
- 'Power-on' and 'grid-on' warning lights - inspection at a distance.
- Catch tray with draught deflector - keeps dead insects in tray.
- Spring-loaded removable killing grid - easy cleaning.
- Wrap around guard - 360 degree protection.
- Choice of mounting option for ease of placement.

## Nemesis® Ultima 80

This robust advanced high voltage fly killer is ideal for large industrial areas away from exposed foodstuff. It features a unique transformer, 'power-on' and 'grid-on' warning lights and offers overall ease of service.

<b>Dimensions</b>	H: 43.2cm W: 68cm D: 15.7cm
<b>Weight</b>	10Kg
<b>Coverage</b>	<div style="display: flex; align-items: center;"> <div style="margin-right: 10px;">□</div>             Wall mounted: 240m<sup>2</sup> </div> <div style="display: flex; align-items: center;"> <div style="margin-right: 10px;">☒</div>             Ceiling-suspended: 480m<sup>2</sup> </div>
<b>Finish</b>	<div style="display: flex; align-items: center;"> <div style="width: 15px; height: 15px; background-color: white; border: 1px solid black; margin-right: 5px;"></div>             White         </div> <div style="display: flex; align-items: center;"> <div style="width: 15px; height: 15px; background-color: #cccccc; border: 1px solid black; margin-right: 5px;"></div>             Stainless Steel         </div>
<b>Tube Data</b>	<ul style="list-style-type: none"> <li>• 2 x 40-watt PestWest Quantum BL tubes</li> <li>• Shatterproof coating with industry compliant FEP</li> </ul>



## Nemesis® Ultima 45

This robust, compact and advanced high voltage fly killer is suitable for industrial areas away from exposed foodstuff as well as commercial premises. It features a unique transformer, 'power-on' and 'grid-on' warning lights and offers overall ease of service.

<b>Dimensions</b>	H: 43.2cm W: 52.8cm D: 15.7cm
<b>Weight</b>	9Kg
<b>Coverage</b>	<div style="display: flex; align-items: center;"> <div style="margin-right: 10px;">□</div>             Wall mounted: 140m<sup>2</sup> </div> <div style="display: flex; align-items: center;"> <div style="margin-right: 10px;">☒</div>             Ceiling-suspended: 280m<sup>2</sup> </div>
<b>Finish</b>	<div style="display: flex; align-items: center;"> <div style="width: 15px; height: 15px; background-color: white; border: 1px solid black; margin-right: 5px;"></div>             White         </div> <div style="display: flex; align-items: center;"> <div style="width: 15px; height: 15px; background-color: #cccccc; border: 1px solid black; margin-right: 5px;"></div>             Stainless Steel         </div>
<b>Tube Data</b>	<ul style="list-style-type: none"> <li>• 3 x 15-watt PestWest Quantum BL tubes</li> <li>• Shatterproof coating with industry compliant FEP</li> </ul>



# COMMERCIAL RANGE

The Commercial Range is designed with both the professional technician and the end user in mind. The units combine compact and powerful designs with tool-free maintenance and a choice of either wall-mounted, ceiling-suspended or freestanding options.

The Commercial units are ideal for smaller premises, shops and even for domestic use. With additional design features they provide you with protection far above what their size and price would indicate.

## TITAN 300

With a wrap-around chrome guard giving 360° protection, this all-metal unit offers features and performance far beyond its price. It is ideal for larger kitchens, shops, cafés and all commercial uses.

<b>Dimensions</b>	H: 33cm W: 49.5cm D: 13.5cm
<b>Weight</b>	7.5Kg
<b>Coverage</b>	<input type="checkbox"/> Wall mounted: 90m <sup>2</sup>
	<input type="checkbox"/> Ceiling-suspended: 180m <sup>2</sup>
<b>Finish</b>	White
	Stainless Steel
<b>Tube Data</b>	<ul style="list-style-type: none"><li>• 2 x 15-watt PestWest Quantum BL tubes</li><li>• Shatterproof coating with industry compliant FEP</li></ul>



## TITAN ALPHA

This powerful yet compact model is ideal for shops, kitchens, cafés, take-away outlets and even domestic use.

<b>Dimensions</b>	H: 30.5cm W: 35cm D: 15cm
<b>Weight</b>	4Kg
<b>Coverage</b>	<input type="checkbox"/> Wall mounted / Freestanding: 80m <sup>2</sup>
	<input type="checkbox"/> Ceiling-suspended: 160m <sup>2</sup>
<b>Finish</b>	White
<b>Tube Data</b>	<ul style="list-style-type: none"><li>• 2 x 15-watt 12" long PestWest Quantum BL tubes</li></ul>



# RETAIL RANGE

To complement the PestWest range of commercial and professional units the Retail units have been designed specifically for areas where fly control should be hidden from view, with decorative and unique front covers that hide the glue board and insect catch.

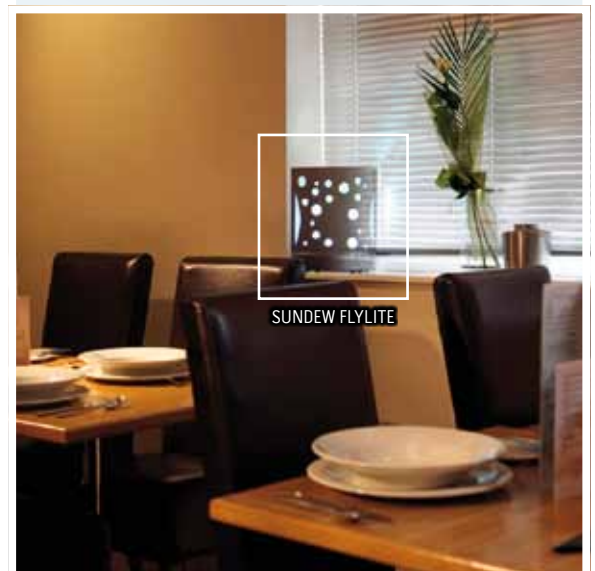
The SunDew™ units offer a choice of attractive, discreet and environmentally friendly sticky trap fly control units, ideal for front-of-house applications e.g. restaurants, cafés, bars, hotels and the home.



A uniquely attractive sticky trap unit perfect for use in cafés, bars, restaurants, offices and in domestic settings. A compact unit with low power consumption for small areas or front-of-house where extra discretion is preferred; the SunDew™ Fly Lite can be wall-mounted or just placed on a table or worktop.

An all stainless steel body with a choice of front covers of either stainless steel with eye-catching bubble cut-out design or white front cover with attractive glow.

<b>Dimensions</b>	H: 30cm W: 25.5cm D: 10cm
<b>Weight</b>	2.5Kg
<b>Coverage</b>	Wall mounted: 30m <sup>2</sup>
<b>Finish</b>	White Stainless Steel
<b>Tube Data</b>	• 1 x 13-watt PestWest Quantum BL tube • Powered by electronic ballast



# SPECIALIST RANGE

PestWest's specialist range provides special safety measures such as high IP ratings and flameproof electrical enclosures giving you protection against the most hazardous and potentially dangerous areas.

The units are built to the highest possible specifications and accredited to the ultimate safety certification for electrical equipment. This means that sensitive and often highly dangerous areas (ATEX classified zones) can be protected without compromising safety standards or insurance requirements.

## Chameleon® EXG

This custom-designed unit has been exclusively engineered to allow protection in areas where gas and vapour are present such as: distilleries, and in the petrochemical and pharmaceutical industries.

The Chameleon® EXG is made to comply with exacting ATEX standards (ATEX Directives 99/92/EC and 94/9/EC), made from the highest quality materials to give a fully corrosion-resistant construction using 304-brushed stainless steel and Marine-grade aluminium alloy.

It is suitable for use in zones 2 and 1 - atmospheres where flammable gases/vapours are likely to arise and zones 22 and 21 - atmospheres where combustible dust/powder may be present.

The use of a specific flameproof glass enclosure with excellent UVA light transmission, combined with two large surface area adhesive boards, optimises the fly control unit's efficacy. The adhesive board holders are adjustable allowing installation in confined spaces.

<b>Dimensions</b>	H: 80cm W: 90cm D: 30cm
<b>Weight</b>	14.5Kg
<b>Coverage</b>	□ Wall mounted: 120m <sup>2</sup>
<b>Finish</b>	Stainless Steel and aluminium alloy
<b>Tube Data</b>	<ul style="list-style-type: none"><li>• 2 x 18-watt PestWest Quantum BL tubes</li><li>• Shatterproof coating with industry compliant FEP</li></ul>



## Chameleon® 4x4 EX

The Chameleon 4x4 EX is an ATEX compliant all stainless steel industrial UV fly trap. It is suitable for use in potentially explosive atmospheres in ATEX zone 22 classified areas. Its IP65 rating also allows installation in damp, dusty or corrosive environments.

This powerful unit covers large industrial areas trapping even the smallest insects on its double-sided board. An advanced electronic ballast circuitry reduces the running costs and increases efficiency. The absence of starters and the board easy lateral insertion and withdrawal facilitate servicing.

<b>Dimensions</b>	H: 61.5cm W: 63.5cm D: 16.5cm
<b>Weight</b>	15.5Kg
<b>Coverage</b>	⌈ Ceiling-suspended: 440m <sup>2</sup>
<b>Finish</b>	Stainless Steel
<b>Tube Data</b>	<ul style="list-style-type: none"><li>• 4 x 40-watt PestWest Quantum BL tubes</li><li>• Shatterproof coating with industry compliant FEP</li><li>• Reflectobakt® technology</li><li>• Powered by an electronic ballast</li></ul>



# SPECIALIST RANGE

## Chameleon 4x4®

The Chameleon 4x4 is a powerful high capacity sticky trap, which is particularly suited for large open areas in industrial food premises. An advanced electronic ballast circuitry reduces the running costs and increases efficiency. The absence of starters and the large board easy lateral insertion and withdrawal facilitate servicing.

<b>Dimensions</b>	H: 61.5cm W: 63.5cm D: 16.5cm
<b>Weight</b>	11.75Kg
<b>Coverage</b>	☐ Ceiling-suspended: 440m <sup>2</sup>
<b>Finish</b>	White
<b>Tube Data</b>	<ul style="list-style-type: none"> <li>• 4 x 40-watt PestWest Quantum BL tubes</li> <li>• Shatterproof coating with industry compliant FEP</li> <li>• Reflectobakt® technology</li> <li>• Powered by an electronic ballast</li> </ul>



## Nemesis®

The Nemesis is an all stainless steel industrial high voltage UV fly killer that is splash proof, draught proof and IP44 rated. It offers a heavy-duty solution for corrosive environments or for areas where washing down or steam cleaning is required.

It features a unique transformer that reduces the shattering of insects, 'power-on' and 'grid-on' warning lights and offers overall ease of servicing.

<b>Dimensions</b>	H: 44.5cm W: 67cm D: 20.5cm
<b>Weight</b>	12.7Kg
<b>Coverage</b>	☐ Wall mounted: 240m <sup>2</sup> ☐ Ceiling-suspended: 480m <sup>2</sup>
<b>Finish</b>	Stainless Steel
<b>Tube Data</b>	<ul style="list-style-type: none"> <li>• 2 x 40-watt PestWest Quantum BL tubes</li> <li>• Shatterproof coating with industry compliant FEP</li> </ul>



## Chameleon® 1x2IP

The Chameleon® 1x2IP unit offers advanced fly control for demanding environments and is suitable for areas that are steam-cleaned, hosed down and are damp or corrosive e.g. dairies, abattoirs and industrial kitchens.

It is entirely made in stainless steel and IP66 certified.

<b>Dimensions</b>	H: 31cm W: 50cm D: 10cm
<b>Weight</b>	6.1Kg
<b>Coverage</b>	☐ Wall mounted: 90m <sup>2</sup>
<b>Finish</b>	Stainless Steel
<b>Tube Data</b>	<ul style="list-style-type: none"> <li>• 2 x 15-watt PestWest Quantum BL tubes</li> <li>• Shatterproof coating with industry compliant FEP</li> <li>• Reflectobakt® technology</li> </ul>



# ANCILLARY PRODUCTS

PestWest utilise advanced technology to produce a range of outstanding ancillary products, providing you with the perfect tools to enhance customer satisfaction and loyalty, ensuring you get the very best from your units.

## PestWest UV-AMETER

The UVA Meter uses a series of LED lights to measure UVA light, which is invisible to the human eye. It can quickly and clearly show either:

- The condition and quality of the UV output of the existing tubes in a fly trap, showing whether they are working at peak performance, in need of replacement or beyond useful life. This is particularly important as not all manufacturers' UV tubes maintain adequate performance throughout their one year life and some shatterproof tube coatings will significantly reduce UVA output
- Or as an effective and valuable tool to measure and assess the amount of ambient UV light and to locate the best position for siting of a new UV fly trap

The sturdily constructed UVA Meter is designed with the user in mind. The size of a mobile phone, it can be carried around conveniently and also has a lanyard facility for ease of use when in awkward situations e.g. at the top of ladders.



## PESTWEST QUANTUM BL SHATTERPROOF TUBES PERFORMANCE AND SAFETY

PestWest Quantum BL ultraviolet shatterproof tubes employ the very best UV technology. The tubes are designed to work at the specific wavelength that is proven to be most attractive to flying insects - 365 nanometers. Utilising revolutionary phosphor technology that allows maximum output for an extended period of time, these tubes are 100% more effective and 40% more powerful than standard UV tubes.

They are fully compliant to the latest European RoHS Directive and as such contain no lead and the lowest mercury content technically achievable, thus bringing a considerable reduction in the potential for environmental pollution.

PestWest Quantum BL shatterproof tubes use industry compliant fluoropolymer coating (FEP) providing high performance and a safe solution for significantly reducing the risk of contamination from glass breakage. The coating reduces the initial UVA output by a maximum of around 5% and it complies with BS EN61549, that includes stringent glass retention under impact tests.



## STICKY BOARDS & REFLECTOBAKT® SLEEVES

The effectiveness of the PestWest professional and specialist sticky trap units is greatly increased as a result of two main features:

- PestWest glue boards offer some of the largest catch surface areas in the market place, enabling a greater catch per board
- The glue boards in PestWest machines are positioned so that they sit closer to the UV tube than other models, providing a more rapid catch

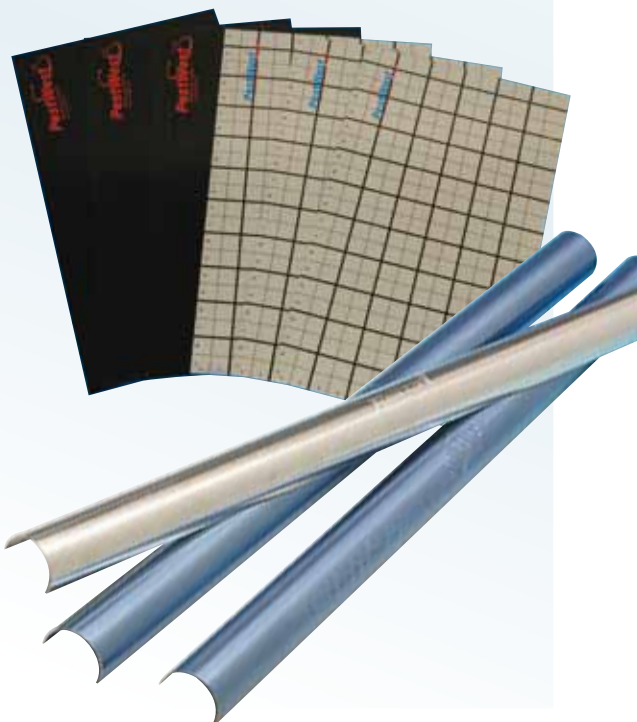
This is possible thanks to the introduction of the Reflectobakt® sleeve (patented). This sleeve shields the full-sized glue board from the drying effect of the UV light, thus making the units more effective for longer periods of time.

It also allows us to strategically place the boards within the unit, thus making them:

- Ultra-slim in design
- More attractive to both the insects and customers
- Positioned in such a way to maximise the catch of flies

Reflectobakt® sleeves are featured in the Chameleon® range of sticky traps, except the Uplight model.

PestWest offer a full range of adhesive boards for the Chameleon® range of sticky traps, including a black board to efficiently hide the catch. The PestWest grey board with reference grid matrix makes monitoring and counting of insects easier.



# QUICK REFERENCE GUIDE

## PROFESSIONAL STICKY TRAPS

	Sticky Board Unit	Electronic Fly Killer	Tubes - PestWest Quantum BL	Starters (in series type)	Wall-mounted	Ceiling-suspended	Dimensions H x W x D	Weight
Chameleon® 1x2 Discretion	✓		2 x 15 watt shatterproof 18" long	2 x FS22 or S2	70m <sup>2</sup> freestanding bracket available	N/A	31.5 x 48.5 x 6.5cm	4.3kg
Chameleon® 1x2	✓		2 x 15 watt shatterproof 18" long	2 x FS22 or S2	90m <sup>2</sup> freestanding bracket available	N/A	31.5 x 48.5 x 6.5cm	4.3kg
Chameleon® 2x2	✓		4 x 15 watt shatterproof 18" long	4 x FS22 or S2	N/A	180m <sup>2</sup>	31.5 x 48.5 x 12.5cm	6kg
Chameleon® Uplight	✓		1 x 15 watt shatterproof 18" long	1 x FS22 or S2	40m <sup>2</sup>	N/A	21 x 47 x 17cm	3.7kg

## THE PRO RANGE

	Sticky Board Unit	Electronic Fly Killer	Tubes - PestWest Quantum BL	Starters (in series type)	Wall-mounted	Ceiling-fitted	Dimensions H x W x D	Weight
Chameleon® Vega	✓		3 x 14 watt shatterproof 21" long	None	150m <sup>2</sup>	N/A	30 x 57 x 4cm	3.2kg
Mirage Pro VS	✓		2 x 25 watt shatterproof 18" long	None	60m <sup>2</sup>	N/A	50 x 30 x 15cm	3.3kg
ON-TOP PRO	✓		2 x 25 watt shatterproof 18" long	None	N/A	50m <sup>2</sup>	59 x 59 x 13cm	6kg
ON-TOP PRO 2	✓		2 x 25 watt shatterproof 18" long	None	N/A	50m <sup>2</sup>	59 x 59 x 13cm	6kg

## PROFESSIONAL ELECTRONIC FLY KILLERS

	Sticky Board Unit	Electronic Fly Killer	Tubes - PestWest Quantum BL	Starters (in series type)	Wall-mounted	Ceiling-suspended/ Freestanding	Dimensions H x W x D	Weight
Nemesis® Ultima 80		✓	2 x 40 watt shatterproof 24" long	2 x FS22 or S2	240m <sup>2</sup>	480m <sup>2</sup>	43.2 x 68 x 15.7cm	10kg
Nemesis® Ultima 45		✓	3 x 15 watt shatterproof 18" long	3 x FS22 or S2	140m <sup>2</sup>	280m <sup>2</sup>	43.2 x 52.8 x 15.7cm	9kg

## COMMERCIAL RANGE

	Sticky Board Unit	Electronic Fly Killer	Tubes - PestWest Quantum BL	Starters (in series type)	Wall-mounted	Ceiling-suspended/ Freestanding	Dimensions H x W x D	Weight
Titan® 300		✓	2 x 15 watt shatterproof 18" long	2 x FS22 or S2	90m <sup>2</sup>	180m <sup>2</sup>	33 x 49.5 x 13.5cm	7.5kg
Titan® Alpha		✓	2 x 15 watt 12" long	2 x FS22 or S2	80m <sup>2</sup>	160m <sup>2</sup>	30.5 x 35 x 15cm	4kg

## RETAIL RANGE

	Sticky Board Unit	Electronic Fly Killer	Tubes - PestWest Quantum BL	Starters (in series type)	Wall-mounted	Freestanding	Dimensions H x W x D	Weight
SunDew® FlyLite	✓		1 x 13 Watt compact	None	30m <sup>2</sup>	30m <sup>2</sup>	30 x 25.5 x 10cm	2.5kg

## SPECIALIST RANGE

	Sticky Board Unit	Electronic Fly Killer	Tubes - PestWest Quantum BL	Starters (in series type)	Wall-mounted	Ceiling-suspended	Dimensions H x W x D	Weight
Chameleon® EXG	✓		2 x 18 watt shatterproof 24" long	2 x FS22 or S2	120m <sup>2</sup>	N/A	80 x 90 x 30cm	14.5kg
Chameleon® 4x4EX	✓		4 x 40 watt shatterproof 24" long	None	N/A	440m <sup>2</sup>	61.5 x 63.5 x 16.5cm	15.5kg
Chameleon® 4x4 White	✓		4 x 40 watt shatterproof 24" long	None	N/A	440m <sup>2</sup>	61.5 x 63.5 x 16.5cm	11.75kg
Nemesis®		✓	2 x 40 watt shatterproof 24" long	2 x FS22 or S2	240m <sup>2</sup>	480m <sup>2</sup>	44.5 x 67 x 20.5cm	12.7kg
Chameleon® 1x2IP	✓		2 x 15 watt shatterproof 18" long	2 x FS22 or S2	90m <sup>2</sup>	N/A	31 x 50 x 10cm	6.1kg

# FLY IDENTIFICATION



5-6mm

## Lesser Housefly *Fannia canicularis*

**Features**  
Grey thorax with three indistinct longitudinal stripes. Abdomen has extensive area of yellow at base.

**Control**  
PestWest sticky traps and fly killers are effective at controlling the lesser housefly.



7-15mm

## Mosquitoes *Culex spp.*

**Features**  
Slender, long-legged insect with forward-pointing, piercing and sucking mouthparts. Wingspan 7-15mm.

**Control**  
PestWest units can be effective at catching mosquitoes.



9-13mm

## Blowfly *Calliphora spp.*

**Features**  
Thorax and abdomen black/blue in colour and often with a metallic appearance. Wingspan 18-20mm.

**Control**  
All PestWest fly killers are a very effective step in controlling these pests.



15-20mm

## Wasp *Vespula spp.*

**Features**  
Black head and thorax, black and yellow patterning on abdomen.

**Control**  
PestWest sticky traps and electronic fly killers are particularly effective at attracting and controlling wasps.



10mm

## Cluster Fly *Pollenia rudis*

**Features**  
Large flies, wingspan up to 20mm. Thorax distinctive dark grey/olive colour covered in golden hairs.

**Control**  
Areas where flies congregate should be treated with residual insecticide. PestWest fly killers are a very effective step in controlling cluster flies.



3-4mm

## Scuttle Fly/Phorid Fly *Megaselia spp.*

**Features**  
Thorax dark brown/tan with distinctive humped appearance.

**Control**  
Chameleon® sticky traps and electronic fly killers are extremely effective at attracting and controlling these pests.



5-6mm

## Mushroom/Fungus Fly *Sciara thomae*

**Features**  
Small insects, wingspan 14-15mm. Black head, thorax and abdomen. Thorax has humped appearance.

**Control**  
Chameleon® sticky traps are a very effective step in controlling mushroom flies.



1.2-1.5mm

## Biting Midge *Culicoides spp.*

**Features**  
Dark brown/black in colour. Wingspan 3-4mm. Will swarm in large numbers and inflict bites.

**Control**  
Insect repellents should be used when outdoors to prevent bites. Chameleon® sticky traps will attract and control midges.



3mm

## Fruit Fly *Drosophila spp.*

**Features**  
Small yellowish brown with darkly striped abdomen. Prominent red eyes.

**Control**  
Chameleon® sticky traps are extremely effective at controlling these smaller insects.



6-8mm

## Common Housefly *Musca domestica*

**Features**  
Thorax grey with four longitudinal dark stripes. Sides of abdomen are yellowish and may be transparent. A dark band covers the final abdomen segments.

**Control**  
PestWest fly killers and sticky traps will effectively control houseflies.



# star power

New slimline technology

## **Chameleon**<sup>®</sup> **VEGA**

Stylish, efficient and economical

*The Chameleon<sup>®</sup> Vega is a stylish, powerful and economical UV fly trap. Its elegant and ultra-slim design is combined with an all stainless steel construction.*

The Chameleon<sup>®</sup> Vega features new higher energy efficient T5 14-watt UVA tubes with integrated Reflectobakt<sup>®</sup> technology powered by a state of the art electronic ballast to deliver efficient fly control with low running costs.

- Unique slimline design
- New high efficiency RoHS compliant PestWest Quantum BL tubes
- New integrated Reflectobakt<sup>®</sup> technology for improved fly catch
- Reduced glass content & electrical consumption without compromising performance
- Improved ease of service
- All stainless steel construction
- 3-year guarantee

Weight: 3.2 Kg

Dimensions: H x W x D = 30 x 57.5 x 4 cm

Coverage area: 150 m<sup>2</sup>



PestWest Electronics Limited, West Yorkshire, United Kingdom

t: +44 (0) 1924 268500

f: +44 (0) 1924 273591

e: [info@pestwest.com](mailto:info@pestwest.com)

[www.pestwest.com](http://www.pestwest.com)

DISTRIBUTED BY

