

PEST PAL

Insect Guide



Your mini guide
to **mini beasts**

Confidence in
Fly Control



PestWest USA LLC, 7135 16th Street E, Suite 124, Sarasota, FL 34243
OFFICE: 941.358.1983 FAX: 941.358.1916 TOLL FREE: 866.476.7378
EMAIL: order@pestwest.com

www.pestwest.com



Common House fly

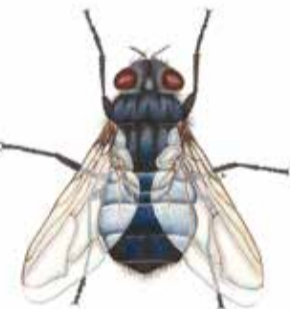
Musca domestica

Stats

Length 6 - 8 mm
Wingspan 13 - 15 mm

Appearance

Grey thorax with four longitudinal dark stripes. Sides of abdomen are yellowish and may be transparent. A central dark band broadens at the back to cover the final abdominal segments. Fourth vein on wings bends slightly forward almost reaching third vein.



Blowfly

Calliphora vicina

Stats

Length 9 - 13 mm
Wingspan 18 - 20 mm

Appearance

Adults are large robust flies, with a stout abdomen. Thorax is black/blue and dusky, and the abdomen is likewise colored.



Lesser House fly

Fannia canicularis

Stats

Length 5 - 6 mm
Wingspan 10 - 12 mm

Appearance

Grey thorax with three indistinct longitudinal stripes on it. Abdomen has extensive area of yellow at its base. Venation is characteristic with 4th longitudinal vein extending to the wing margin in a relatively straight line.



Wasp

Vespula spp.

Stats

Length 15 - 20 mm

Appearance

Adult worker wasps have a black head and thorax with the characteristic black and yellow patterning on the abdomen. Fore and hindwings held together by a row of minute hooks giving the appearance of only one wing per side of the wasp. Wings are heavily veined and 9 - 13 mm long.



Fruit Fly

Drosophila spp.

Stats

Length 3 mm

Appearance

Fruit fly adults are small yellowish/brown flies with a darkly striped abdomen. The prominent compound eyes are generally red in color, although darker variants occur. Wings have two clear notches in the front border, which can clearly be seen with a hand lens.



Cluster Fly

Pollenia rudis

Stats

Length up to 10 mm

Wingspan up to 20 mm

Appearance

Thorax has a distinctive dark greyish/olive color and is covered in golden hairs. The abdomen has a checkered pattern. Wings are held at rest folded tightly on top of the abdomen.



Phorid Fly

Megaselia spp.

Stats

Length 3 - 4 mm

Wingspan 9 - 10 mm

Appearance

Thorax is usually dark brown/tan in color with distinctive humped appearance. Wings have no cross veins. Apart from two veins on leading margin of wings, there are only four veins leading from hindmost of veins on the leading edge to hind margin of the wing.



Fungus gnat

Sciara spp.

Stats

Length 5 - 6 mm

Wingspan 14 - 15 mm

Appearance

Black head, thorax and abdomen. Thorax has humped appearance. Wings have few veins but have a characteristic Y-shaped cell in the central portion of the wing.



Moth Fly

Family Psychodidae

Stats

Length 3 - 4 mm

Wingspan 10 - 12 mm

Appearance

Greyish/brown in color. Wings and body covered in scales, giving the fly the appearance of a small moth. Venation of wings has no cross veins, only around 8 veins (two of which are forked) running almost parallel to the front edge of the wing.



Mosquitoes

Family Culicidae

Stats

Length 7 - 15 mm

Wingspan 7 - 15mm

Appearance

Slender, long-legged insect with forward-pointing, piercing and sucking mouthparts. Wings have well-developed venation, in some cases wings have fringed hind margin and veins have scales associated with them.